

005536

RECEIVED
LARAMIE COUNTY
CHEYENNE, WY.

CERTIFIED LAND CORNER RECORDATION

'86 FEB 21 PM 3 43

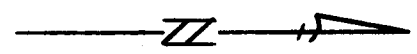
DESCRIPTION OF CORNER EVIDENCE FOUND, AND ORIGINAL RECORD (if known)

The corner of Sections 7, 8, 17, and 18, T.16N., R.62W., 6th P.M., Laramie County, Wyoming reestablished on the centerline of asphalt road and fenced R.O.W.'s and 40.00 feet East of corner of fence to West.

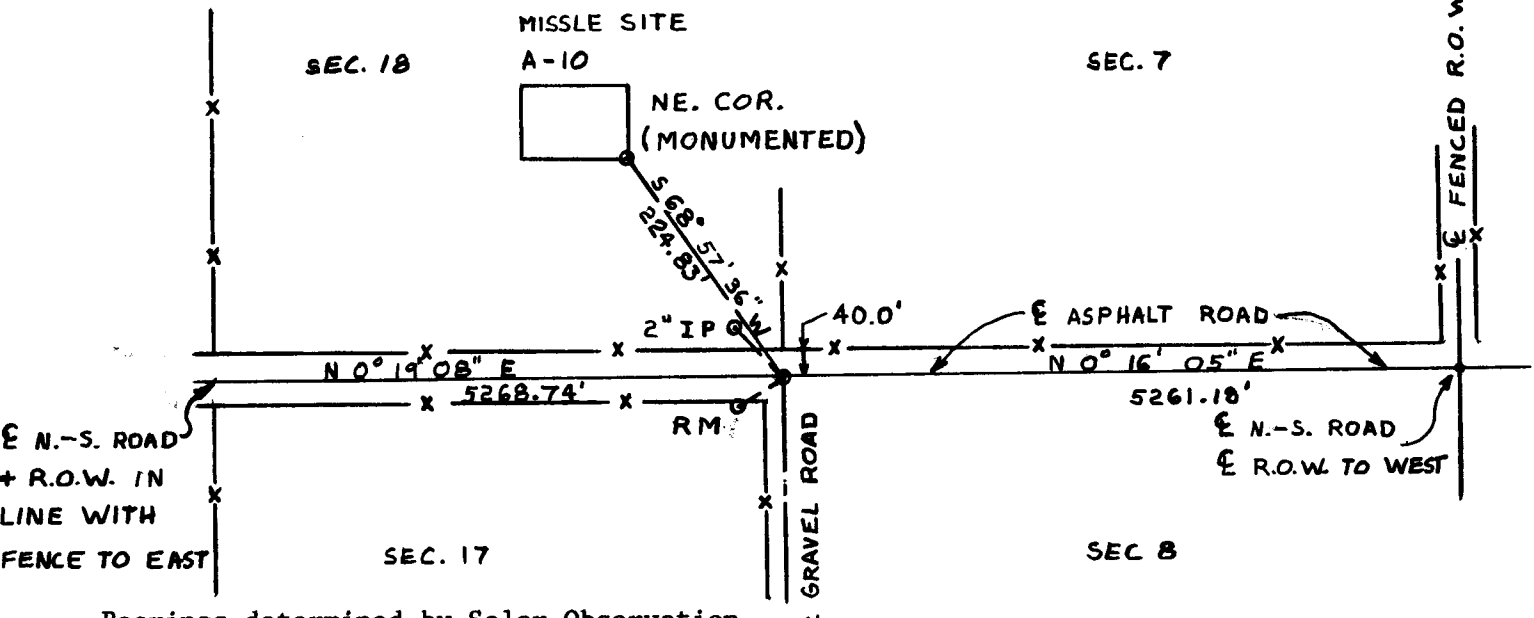
DESCRIPTION OF MONUMENT AND ACCESSORIES ESTABLISHED TO PERPETUATE THE ORIGINAL LOCATION OF THIS CORNER:

At the corner set a No. 4 rebar 4" below road surface from the corner, set a reference monument, a No. 5 rebar, with plastic cap bears S.34°59'24"E., 72.33 feet distant a 2" iron pipe bears S.39°03'27"W., 67.87 feet distant. The NE corner of Missile Site (A-10) bears S.68°57'36"W., 224.83 feet distant.

SKETCH, WITH COURSE AND DISTANCE TO ADJACENT CORNER IF DETERMINED IN THIS SURVEY. (May Sketch or Paste Reproduction on Reverse Side.)



T. 16 N., R. 62 W.



Bearings determined by Solar Observation

I, Jeffrey D. Youngquist certify that I have carefully performed or reviewed the work done on the diagrammed corner as reported on this recordation form and approve the same.

Jeffrey D. Youngquist Signature of Surveyor
R.L.S 3515 Registration No.

STATE OF WYOMING,
Office of Clerk and Recorder,
Laramie
County of _____

This "corner record" was filed for record on the 21 day of Feb, 1986, was noted on the cross-index plat and is assigned page No. _____, in book No. _____

Frank C. Whitehead
County Official

Cross Index No. _____	T. _____	R. _____	Mer. _____
_____	T. _____	R. _____	Mer. _____
_____	T. _____	R. _____	Mer. _____
_____	T. _____	R. _____	Mer. _____
_____	T. _____	R. _____	Mer. _____
_____	T. _____	R. _____	Mer. _____
_____	T. _____	R. _____	Mer. _____

BOOK 1224

J-5 16-602

1288